



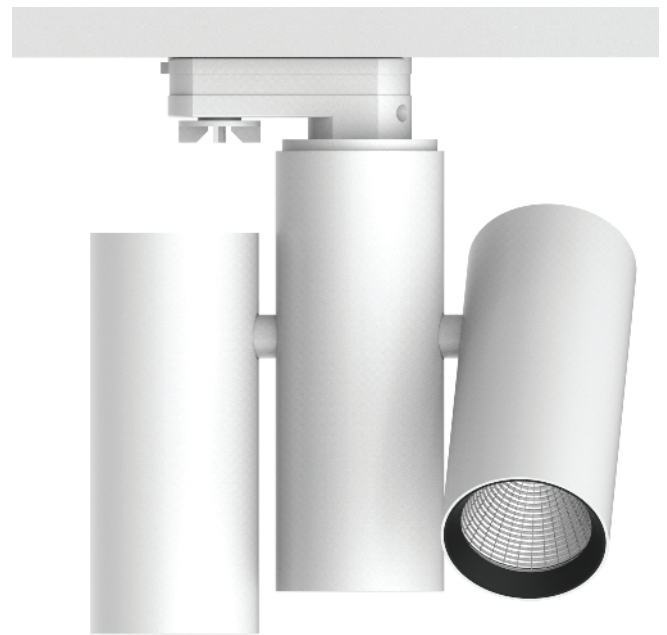
**greenlux**  
cost reduction LED lighting

## Dual Series LED Track Spot Light

- 360° horizontal & 350° vertical rotatable
- High quality COB light source
- Even light output with anti-glare & dark spot
- Performs high efficiency and energy saving, Up to 80% energy saving compared to standard CFL
- Replaces traditional track lights
- IP20 for indoor use only
- 3 Years Warranty
- Applications include shopping centres, galleries, cafes, hotels, theatres, museums & display cases

### Specifications

<b>Colour Range</b>	2700 ~ 5000K
<b>Lumens</b>	75lm/W
<b>Power Consumption</b>	10W / 20W
<b>Input Voltage</b>	100V/240V AC
<b>Chipset</b>	COB
<b>Beam angle</b>	15° / 24° / 36° / 60°
<b>Adapter</b>	1-Circuit / 3-Circuit
<b>Power Factor</b>	>0.9
<b>Dimmable</b>	Triac Dimmer (option)
<b>CRI</b>	>80 or >90
<b>IP</b>	20
<b>Product Dimensions (mm)</b>	10W    Ø122*234 20W    Ø186*234
<b>Housing Materials</b>	Aluminum Die-casting
<b>Housing Colour</b>	White / Black / Silver



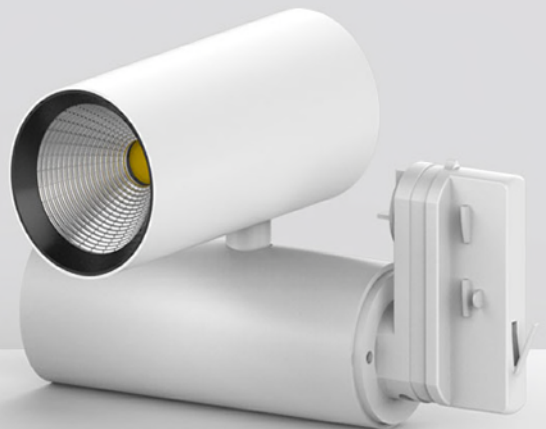
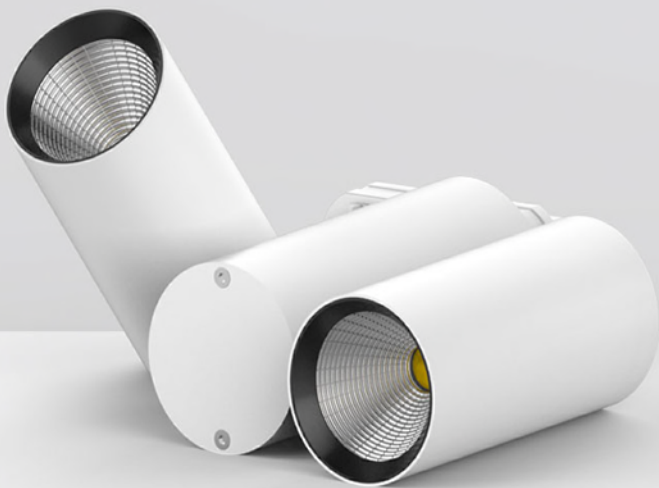


## NEW **DESIGN**

LED Track light adopts Citizen LEDs with excellent color rendering index to increase the color fidelity of the target illuminated object.

## **EXCELLENT** HEAT DISSIPATION

even light output without glare & dark spot.





## ADJUSTABLE LIGHTING

orientation with 360 degree in horizontal direction and 350 in vertical direction provided

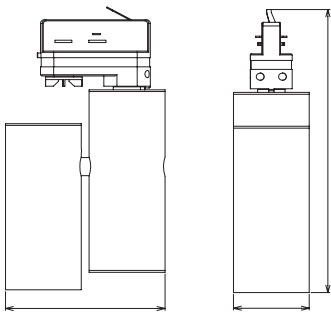




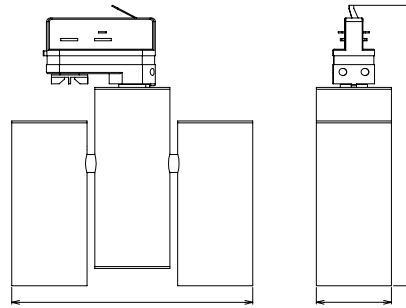
**greenlux**  
cost reduction LED lighting

## Dual Series LED Track Spot Light

10W



20W



Model	Installation	Product size (mm)	LED	Beam Angle	Lumen (lm)
GUDUA-10W-T	Track Mounted	Ø122*234	COB	15°/24°/36°/60°	750
GUDUA-20W-T	Track Mounted	Ø186*234	COB	15°/24°/36°/60°	1500

